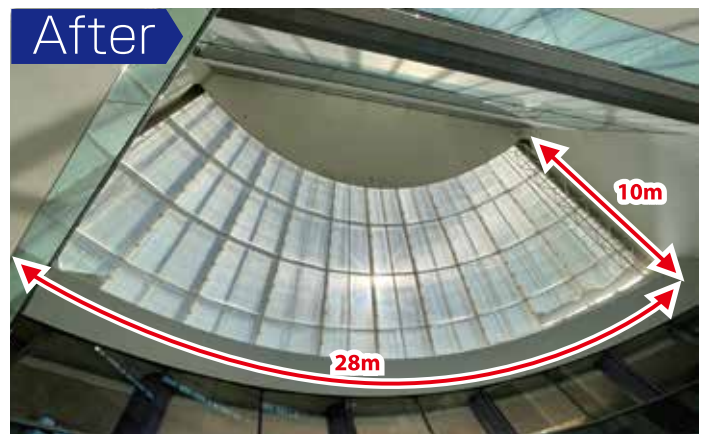


Heat protection screen



Product Information	Mie Prefectural Driver's License Center	
	Product	Indoor Heat Shield Screen/Tapestry
	Fabric	Silverscreen/Grey
	Size	W2.8m X H2.6m,40sheets

Installed in a special place on a high, inclined, or curved surface. For many years, it had been suffering from rising indoor temperatures and glare due to direct sunlight, so they delivered a tapestry-type screen made of fabric with a heat-shielding effect. Since the fabric has good transparency and excellent light-shielding and heat-shielding effects, making it a bright and comfortable public space.



What is the heat protection screen?

The heat protection screen is made of fiberglass fabric and the back side is metallized with an ultra-thin aluminum layer. It takes advantage of high reflectivity. By using heat protection screens, the heating and cooling costs can be reduced and CO₂ emissions can also be reduced significantly. In summer, it reflects sunlight to prevent heat build-up, and in winter, it insulates and does not let indoor heat escape.

Good for the environment!

- Reduction of CO₂ emissions
- Cost Savings
- Energy Saving & Ecology

Heat control reduces the running cost of air conditioning equipment and contributes to the reduction of CO₂ emissions. In addition, since it is not necessary to choose special window glass, the cost of window glass can be reduced.



Good for society!

- Heat Control
- Glare Control
- Privacy protection

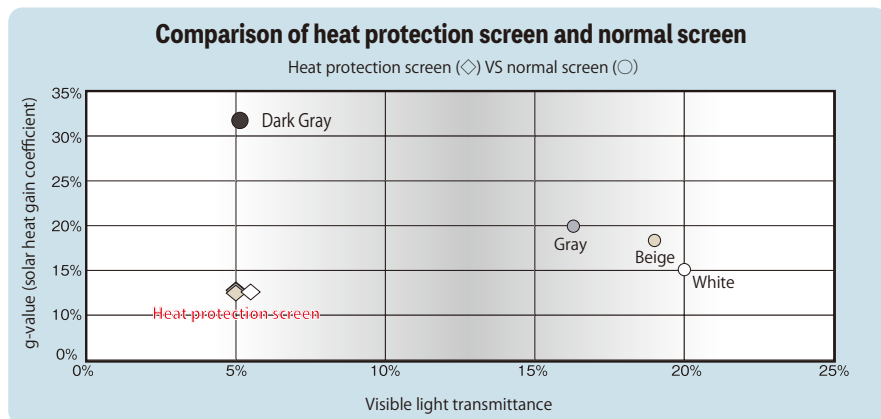
With an average heat reflection effect of 75%, radiant heat is reduced, allowing for better temperature regulation in the room and reducing temperature changes near windows, making effective use of space! Bring moderate light into the room to reduce glare and improve work efficiency.

Functionality and Design

The opening rate is 4%, providing good transparency, without obstructing the view and without a feeling of oppression. You can enjoy the view outside while still having privacy during the day. The fabric is available in four colors; white, beige, gray, and dark gray, allowing you to create any space you want. It reduces glare and heat regardless of the shade of the color.



Heat protection screen function



* The g-value represents the amount of solar thermal energy that can be taken into (entered) the interior of the building. The lower this number, the better the insulation effect. Visible light transmittance refers to the amount of sunlight that can be seen by the eye. The lower this number, the less discomfort caused by glare.

Screen Data

- Maximum width of raw material: 1,900mm, 2,040mm
- Composition: 36% glass, 64% PVC
- Quality: 400 g / m²
- Shading rate: about 95%
- Weave: Plain weave
- Thickness: 0.5mm
- Flame retardant performance test registration number: B0070033
- Environmental Product Certification Eco-Tex Standard 100 certified



SHY Co., LTD.

□ Head Quarters 3455 Tsuoki, Sendomachi, Tsu City, Mie Prefecture 514-0801
TEL 059-226-3334 FAX 059-224-8841

□ Tokyo Office 46-3 Kanda Sakumagashi, Chiyoda-ku, Tokyo UF Building 5 7th floor 101-0026
TEL 03-5822-2282 FAX 03-5822-2283